

A-SILICONE IMPRESSION MATERIAL



**A SMALL STEP FOR DENTISTS**  
A GREAT STEP FOR DENTISTRY

**PRESIDENT**  
CLASSIC SINCE 1975



**PRESIDENT**  
The Original

 **COLTENE**



## A SMALL STEP FOR DENTISTS A GREAT STEP FOR DENTISTRY



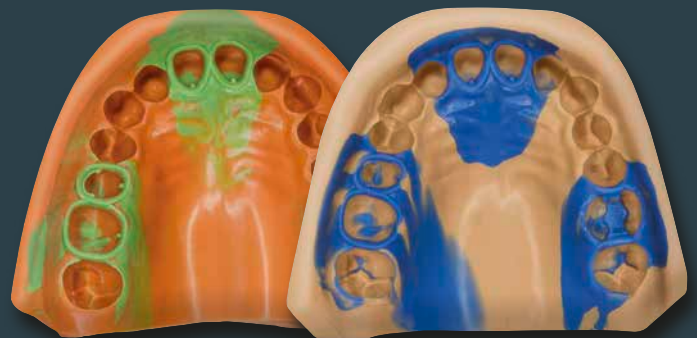
**THE INTRODUCTION OF PRESIDENT IN 1975 – THE FIRST A-SILICONE IN THE MARKET – IS CONSIDERED A MILESTONE IN THE DEVELOPMENT OF HIGH-PRECISION DENTAL IMPRESSION MATERIALS.**

With the use of polyvinylsiloxane (PVS) elastomers for the first time PRESIDENT users reached an unprecedented dimensional stability and precision, which today still characterizes an A-Silicone. The PRESIDENT brand is still convincing as a traditional product line of COLTENE with its sovereign quality that has been continuously optimized.



## TRAY MATERIALS

The classical PRESIDENT tray materials offer a **very high tear strength** and **elasticity**. Due to flawless removal impressions are precise and succeed even under most difficult conditions. PRESIDENT heavy body is **surface activated** and **thixotropic** with fast pressure build up so that the wash material is easily driven into the clinically critical areas. PRESIDENT putties mix quickly, are offered in two end hardnesses and one fast version.

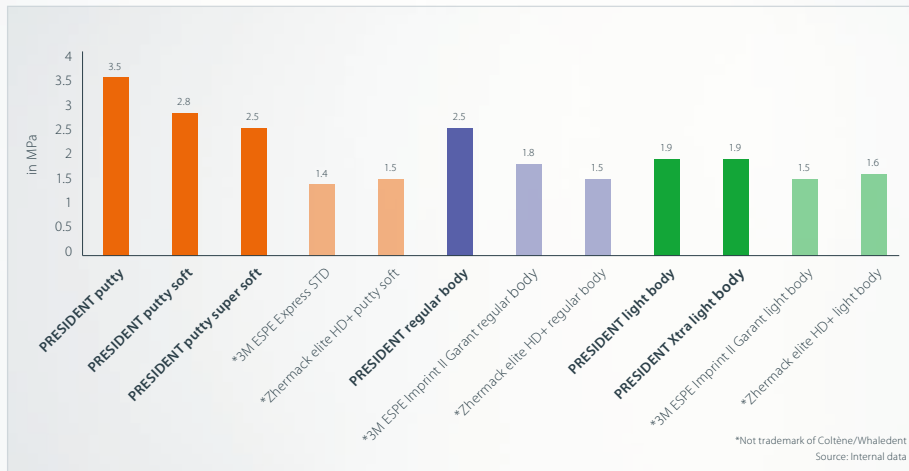


## WASH MATERIALS

The classical PRESIDENT wash materials are stable but free-flowing under pressure to capture all marginal details precisely. The **surface activated, hydrophilic** properties are effected by surfactants in the material. In contact with moisture these additives move to the surface and decrease the surface tension, resulting in an **outstanding wettability**.



The PRESIDENT portfolio shows the highest tear strength compared to competitors which results in great precision and a good dimensional stability



## TEAR STRENGTH

### 40 YEARS OF QUALITY & LOYALTY

Since 40 years dentists trust in PRESIDENT.

The loyalty to this brand illustrates that we kept our quality promise during the time.

After 40 years our firstborn A-Silicone child has grown up.

On occasion of this event COLTENE has come up with a special present for actual and potential customers:



**NEW**

putty super soft



**NEW**

Xtra light body

ORDER INFORMATION



**microSystem 25 ml**

- 60019932**      **PRESIDENT The Original Xtra light body** NEW  
 4 x 25 ml cartridge  
 12 x Universal Mixing Tips
- 6002**            **PRESIDENT light body**  
 4 x 25 ml cartridge  
 12 x Universal Mixing Tips
- 6005**            **PRESIDENT light body**  
 20 x 25 ml cartridge
- 6012**            **PRESIDENT regular body**  
 4 x 25 ml cartridge  
 12 x Universal Mixing Tips
- 6015**            **PRESIDENT regular body**  
 20 x 25 ml cartridge

**50 ml**

- 60019937**      **PRESIDENT The Original Xtra light body** NEW  
 2 x 50 ml cartridge  
 12 x Universal Mixing Tips
- 4626**            **PRESIDENT light body**  
 2 x 50 ml cartridge  
 12 x Universal Mixing Tips
- 4627**            **PRESIDENT regular body**  
 2 x 50 ml cartridge  
 12 x Universal Mixing Tips

**75 ml**

- 6712**            **PRESIDENT heavy body**  
 2 x 75 ml cartridge  
 8 x Mixing Tips Turquoise
- 6715**            **PRESIDENT heavy body**  
 20 x 75 ml cartridge

**putty**

- 4617**            **PRESIDENT putty**  
 2 x 300 ml  
 2 x spoons
- 4843**            **PRESIDENT putty soft**  
 2 x 300 ml  
 2 x spoons
- 4632**            **PRESIDENT fast putty soft**  
 2 x 300 ml  
 2 x spoons
- 60019944**      **PRESIDENT The Original putty super soft** NEW  
 2 x 300 ml  
 2 x spoons

**System 360**

- 6100**            **PRESIDENT heavy body Starter Kit**  
 1 x 380 ml cartridge  
 10 x Dynamic Mixing Tips  
 1 x Fixation Ring
- 6105**            **PRESIDENT heavy body Refill**  
 2 x 380 ml cartridge

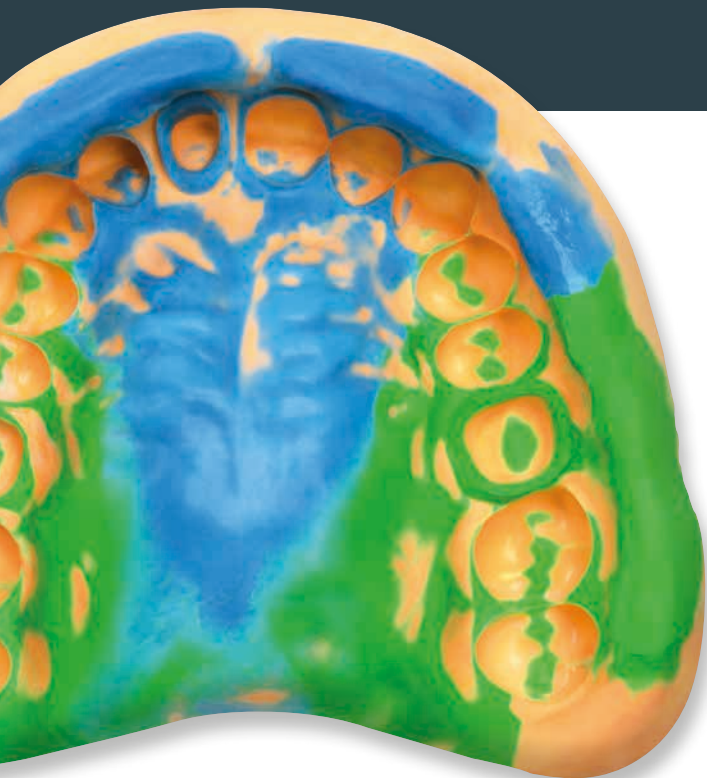
**Tubes**

- 4667**            **PRESIDENT light body**  
 1 x 53 ml Base  
 1 x 53 ml Catalyst
- 4717**            **PRESIDENT regular body**  
 1 x 53 ml Base  
 1 x 53 ml Catalyst
- 4767**            **PRESIDENT heavy body**  
 1 x 53 ml Base  
 1 x 53 ml Catalyst



## 40 YEARS EXPERIENCE

40 years of PRESIDENT means 14,600 days of satisfied dentists. Our first A-Silicone has been a steady companion during the years. COLTENE would like to thank for the loyalty and take the opportunity to introduce an additional and revised line of our well-known brand:



# PRESIDENT

The Original

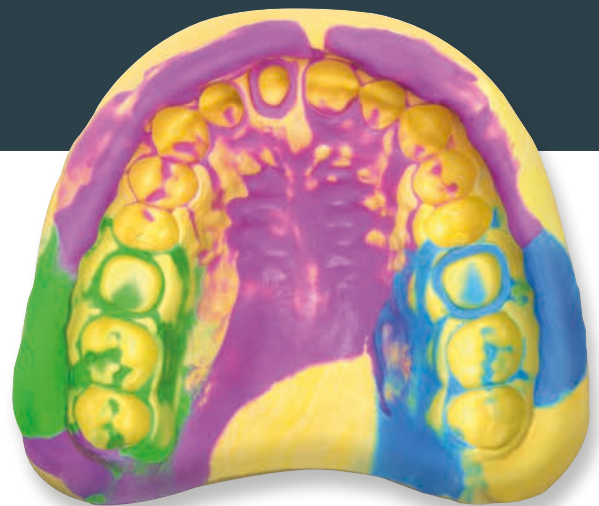
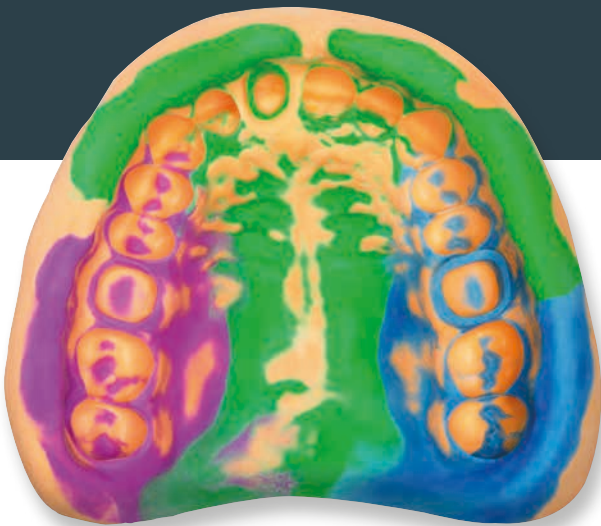
# PRESIDENT

The Original

## WHAT'S NEW?

### NEW COLORS

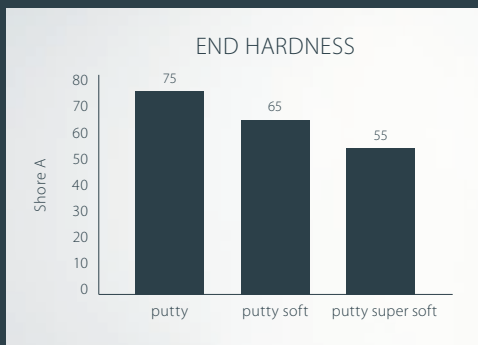
The new, fresh colors of the PRESIDENT line provide a better contrast between wash and tray material and thus show a more accurate detail readability.



## NEW TRAY MATERIALS

The tray material portfolio of new PRESIDENT contains beside heavy body, putty and putty soft two additional viscosities: **MonoBody** and **putty super soft**.

With the line extension of the monophase material MonoBody, implant impressions can be done even more precisely. In addition, the new putty super soft is very smooth and easy to mix.



No matter which material you prefer, you will always make the right choice. PRESIDENT heavy body is highly viscous which perfectly fits to new Xtra light body. Putty is the preferred material for the 2-step technique where pressure is needed. For difficult oral situations putty super soft is recommended. Different end hardnesses offer optimal stability and simple ease of cutting.

## NEW WASH MATERIALS

The new wash material portfolio of PRESIDENT offers beside light body and regular body one additional viscosity: **Xtra light body**

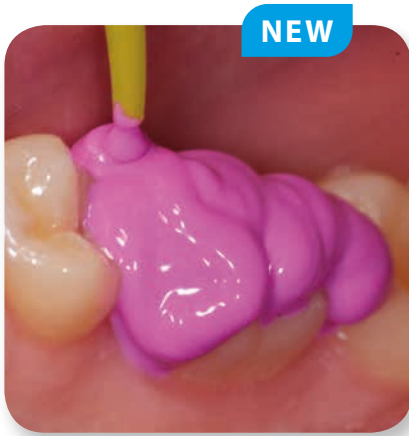
As indicated by the name, Xtra light body is a very fluid wash material which can be used to capture even marginal details as it flows into the narrowest areas without dripping from the tooth.





# PRESIDENT

The Original



Xtra light body

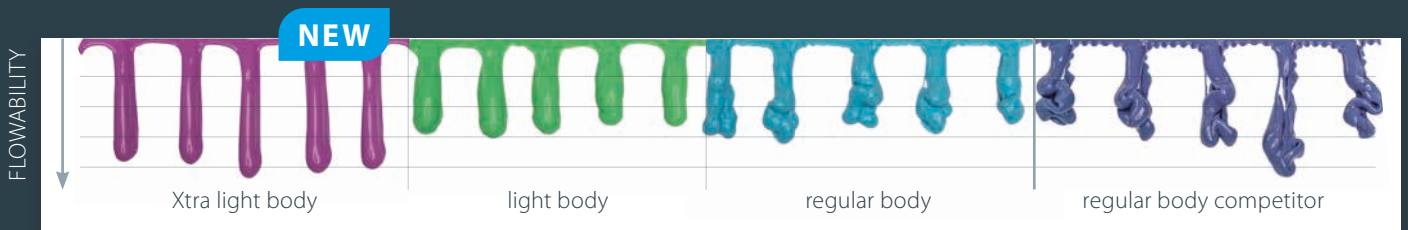


light body



regular body

PRESIDENT wash materials show even leveling and thixotropy which results in accurate contours.



		Flowability	Viscosity	End hardness	Tear strength	Elastic recovery
WASH	Xtra light body	5 icons	1 icon	50 Shore A	1.9 MPa	99.8 %
	light body	4 icons	2 icons	50 Shore A	1.9 MPa	99.8 %
	regular body	3 icons	3 icons	55 Shore A	2.5 MPa	99.8 %
	MonoBody	2 icons	4 icons	58 Shore A	3.0 MPa	99.7 %
	heavy body	1 icon	5 icons	63 Shore A	3.5 MPa	99.7 %
TRAY	putty super soft			55 Shore A	2.5 MPa	99.5 %
	putty soft			65 Shore A	2.8 MPa	99.4 %
	putty			75 Shore A	3.5 MPa	99.2 %

THE PRESIDENT PORTFOLIO AT A GLANCE

## ORDER INFORMATION

### microSystem 25 ml

- 60019932** **PRESIDENT** The Original **Xtra light body**  
4 x 25 ml cartridge  
12 x Universal Mixing Tips
- 60019933** **PRESIDENT** The Original **light body**  
4 x 25 ml cartridge  
12 x Universal Mixing Tips
- 60019934** **PRESIDENT** The Original **light body**  
20 x 25 ml cartridge
- 60019935** **PRESIDENT** The Original **regular body**  
4 x 25 ml cartridge  
12 x Universal Mixing Tips
- 60019936** **PRESIDENT** The Original **regular body**  
20 x 25 ml cartridge

### 50 ml

- 60019937** **PRESIDENT** The Original **Xtra light body**  
2 x 50 ml cartridge  
12 x Universal Mixing Tips
- 60019938** **PRESIDENT** The Original **light body**  
2 x 50 ml cartridge  
12 x Universal Mixing Tips
- 60019939** **PRESIDENT** The Original **regular body**  
2 x 50 ml cartridge  
12 x Universal Mixing Tips
- 60019940** **PRESIDENT** The Original **heavy body**  
2 x 50 ml cartridge  
6 x Mixing Tip Turquoise

### 75 ml

- 60019941** **PRESIDENT** The Original **heavy body**  
2 x 75 ml cartridge  
8 x Mixing Tips Turquoise



### putty

- 60019942** **PRESIDENT** The Original **putty**  
2 x 300 ml, 2 x spoons
- 60019943** **PRESIDENT** The Original **putty soft**  
2 x 300 ml, 2 x spoons
- 60019944** **PRESIDENT** The Original **putty super soft**  
2 x 300 ml, 2 x spoons
- 60022166** **PRESIDENT** The Original **fast putty soft**  
2 x 300 ml, 2 x spoons

### System 360

- 60019945** **PRESIDENT** The Original **MonoBody Starter Kit**  
1 x 380 ml cartridge  
10 x Dynamic Mixing Tips  
1 x Fixation Ring
- 60019946** **PRESIDENT** The Original **MonoBody Refill**  
2 x 380 ml cartridge
- 60019947** **PRESIDENT** The Original **heavy body Starter Kit**  
1 x 380 ml cartridge  
10 x Dynamic Mixing Tips  
1 x Fixation Ring
- 60019948** **PRESIDENT** The Original **heavy body Refill**  
2 x 380 ml cartridge

### Tubes

- 60019949** **PRESIDENT** The Original **light body**  
1 x 53 ml Base  
1 x 53 ml Catalyst
- 60019950** **PRESIDENT** The Original **regular body**  
1 x 53 ml Base  
1 x 53 ml Catalyst

# PRESIDENT

The Original

## ACCESSORIES

### PRESIDENT impression trays

#### Trays, transparent (12 pcs)

C6901	# 1 Large Upper
C6902	# 2 Large Lower
C6903	# 3 Medium Upper
C6904	# 4 Medium Lower
C6905	# 5 Small Upper
C6906	# 6 Small Lower
C6907	# 7 Quadrant UL/LR
C6908	# 8 Quadrant UR/LL
C6909	# 9 Anterior

#### Trays, blue – autoclavable (12 pcs)

C6950	# 1 Large Upper
C6951	# 2 Large Lower
C6952	# 3 Medium Upper
C6953	# 4 Medium Lower
C6954	# 5 Small Upper
C6955	# 6 Small Lower
C6956	# 7 Quadrant UL/LR
C6957	# 8 Quadrant UR/LL
C6958	# 9 Anterior

### microSystem 25 ml

6270	microSystem Dispenser
60019663	Universal Mixing Tip (40 pcs)
6210	Oral Tips White (100 pcs)
6555	Oral Tips Yellow (100 pcs)
6223	Spreader Tips (100 pcs)

### 50 ml

6900	Dispenser 50/75 ml
60019663	Universal Mixing Tip (40 pcs)
6555	Oral Tips Yellow (100 pcs)
6223	Spreader Tips (100 pcs)



### 75 ml

6900	Dispenser 50/75 ml
6958	Plunger 75 ml (for Dispenser 50 ml)
6552	Mixing Tip Turquoise (40 pcs)

### System 360

6162	Dynamic Mixing Tip Yellow (40 pcs)
6163	Fixation Ring

### Miscellaneous

4422	Coltopress (tube squeezing aid)
4420	Cutting Knife
4410	Adhesive (10 ml)
4405	Adhesive autoclavable (10 ml)
4426	Impression Syringes incl. 15 tips (3 pcs)
4428	Refill tips (50 pcs)
4412	Mixing Pad (1 pcs)
4414	Mixing Pads (10 pcs)
4415	Spatula

PRESIDENT  
CLASSIC SINCE 1975

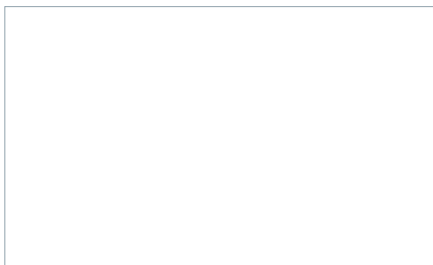


PRESIDENT  
The Original

IT'S UP TO YOU!



© 2017 Coltène/Whaledent AG - [www.coltene.com](http://www.coltene.com)



**Coltène/Whaledent Ltd.**  
The President Suite  
Kendal House, Victoria Way  
Burgess Hill, West Sussex  
RH15 9NF/UK  
T +44 1444 235486  
F +44 1444 870640  
[info.uk@coltene.com](mailto:info.uk@coltene.com)

**Coltène/Whaledent AG**  
Feldwiesenstrasse 20  
9450 Altstätten/Switzerland  
T +41 71 757 53 00  
F +41 71 757 53 01  
[info.ch@coltene.com](mailto:info.ch@coltene.com)

**Coltène/Whaledent Inc.**  
235 Ascot Parkway  
Cuyahoga Falls  
Ohio 44223/USA  
T +1 330 916 8800  
F +1 330 916 7077  
[info.us@coltene.com](mailto:info.us@coltene.com)

