

PROSTHETICS

DENITAI  
**CATALOG**



## THE FIRST IMPRESSION COUNTS

COLTENE primarily associates prosthetics with precision impression materials, which has been one of the company's core expertise since its foundation. With Coltex/Coltoflax, an extensive impression programme was developed back in the early 1970s, which is still valued by renowned prosthodontists to this day. The launch of PRESIDENT the first A-Silicone on the market in 1975 is viewed as a milestone in the development of high precision dental impression materials.

Today addition cross-linking impression materials are scientifically recognised as the gold standard and are indispensable in the dental practice. The development of practical cartridge systems which significantly simplified bubble-free mixing of impression materials also contributed to their success.

Thanks to the use of 'supertensides' with the introduction of the premium A-Silicone AFFINIS in 2001, impression-taking in the moist environment improved enormously. The outstanding surface affinity and optimised flow properties of AFFINIS ensure perfect impressions, even under the most difficult conditions.

For over two decades, many dentists swear by the SPEEDEX brand. Around 400 mil. impressions have been taken over

this period that underline the trust placed in COLTENE's competence and expertise. The worldwide success of SPEEDEX C-Silicones lies in the outstanding mix of economy and product properties similar to those of A-Silicone.

Impression materials from COLTENE belong to today's globally leading products. Special formulas allow precise impressions to be fabricated quickly and easily. Thanks to the wide product range, the user can utilise the right material for every indication.



## COMPANY

COLTENE is a global leader in the development, manufacture and sale of consumables and small-size equipment for dental treatment applications.

The Dental Group offers a wide range of products, encompassing six segments – solutions for almost all dental treatments. The complete endodontology programme includes root canal preparation with files and rinsing solutions, obturation and post systems. The next extensive range is centred entirely on restorative filling therapy. This particularly includes temporary and permanent filling materials, as well as adhesive systems and polymerisation lamps. Prosthetics represents a further main area. It includes a wide spectrum of condensation and addition cross-linking impression materials. The segments of treatment aids, infection control and rotating instruments round off the programme.

COLTENE has time and time again developed pioneering innovations for over 50 years, and ROEKO for over a 100 years who offer the user first grade dental solutions.

Today the COLTENE Group operates production facilities in Switzerland, Germany, Hungary, Brazil and the USA. It maintains a worldwide sales network with its own subsidiaries and distribution partners in over 120 countries. COLTENE therefore serves dentists, dental technicians, opinion leaders and universities with tailored quality products and services – worldwide.

[www.coltene.com](http://www.coltene.com)

## HISTORY

1910

1920

1930

1940

1950

1960



### ENDODONTICS

1962	ParaPost
1990	ParaPost X-System
1997	ROEKO GP/PP Top color
1999	RoekoSeal Automix 2000
2000	ParaPost Fiber White
2004	GuttaFlow
2011	HyFlex CM



### RESTORATION

1978	Oralloy
1983	BRILLIANT
1988	BRILLIANT Esthetic Line
1991	A.R.T. Bond
1998	SYNERGY
2001	ParaCore, MIRIS
2006	SYNERGY D6
2007	One Coat 7.0
2008	MIRIS 2
2011	COMPONEER



### PROSTHETICS

1974	Coltex/Coltoflax
1975	PRESIDENT
1980	Rapid
1992	SPEEDEX
1995	PRESIDENT microSystem
2000	Jet Bite
2001	AFFINIS
2005	JET BLUE BITE
2006	AFFINIS PRECIOUS

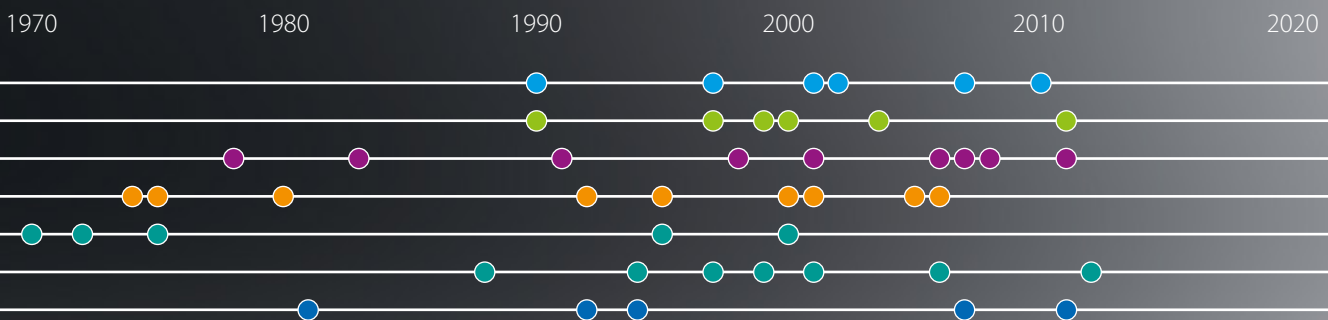
## COMPANY FOUNDATIONS

- 1910 ROEKO GmbH & Co. KG, DE
- 1953 Vigodent, BR
- 1956 Whaledent Inc., US
- 1963 COLTENE AG, CH



## MERGERS

- 1990 Whaledent Inc., US
- 1997 HYGENIC Dental, US
- 2001 DIATECH, CH
- 2002 ROEKO, DE
- 2007 CEI, US
- 2010 Vigodent, BR



### TREATMENT AUXILIARIES

- 1955 Luna
- 1964 Parotisroll
- 1970 Cotton Pellets
- 1972 Surgitip
- 1975 Gelatamp
- 1995 Dental Dam Silicone non latex
- 2000 Flexi Dam non latex

### INFECTION CONTROL

- 1988 BioSonic UC 1 Cleaner
- 1994 Steri-Quick
- 1997 Protecta Quick non latex
- 1999 Simplex-Plus Maxi
- 2001 BioSonic US 100 Scaler
- 2006 BioSonic UC 125
- 2012 Protecta Active Carbon

### ROTARY INSTRUMENTS

- 1981 ML Diamonds
- 1992 Carbides
- 1994 Topspin
- 2007 Speedster
- 2011 SwissFlex

**INDICATION  
PRODUCT TYPE**

**FIELD OF APPLICATION  
PROPERTIES**

**PRODUCT NAME**

**RETRACTION**

**PREPARATION WITH CORDS**

<b>Retraction Cords</b>	Air-jet textured	ROEKO Comprecord	10
	Braided / twisted, impregnated / not impregnated	ROEKO Retracto	
	Twisted with malleable, fine wire-core, impregnated / not impregnated	ROEKO Stay-put	11
<b>Accessories</b>	For placement of retraction cords	Retraction Cord Packer	11

**PREPARATION WITH SILICONE**

<b>Silicone foam</b>	Expanding and addition-curing silicone foam, time-saving, non-traumatic	Magic FoamCord	12
<b>Accessories</b>	Standard compression caps, to stop bleeding and to dry tooth stumps	ROEKO Comprecap	13
	Anatomically shaped compression caps, to stop bleeding and to dry tooth stumps	ROEKO Comprecap Anatomic	13

**IMPREGNATION**

<b>Pretreatment of gingiva</b>	To pretreat the gingiva and impregnation of retraction cords, with 10% aluminium chloride hexahydrate	Gingiva Liquid	13
--------------------------------	---	----------------	----

**BITE REGISTRATION**

<b>A-Silicone</b>	Mousse-like, smooth consistency with very short, patient-friendly intraoral setting time, good milling and cutting properties	JET BLUE BITE fast JET BLUE BITE superfast	16
	Classical bite registration material, ideal stability and simple handling, good milling and cutting properties	Jet Bite	17
	Accessories for microSystem and System 50	JET BLUE BITE, Jet Bite	17

**IMPRESSION**

**A-SILICONE**

		2S	1S	MP	FUI	FI		
<b>Wash material</b>	Premium A-Silicone, low and medium viscosity, hydrocolloid-like property, innovative surface affinity with very low contact angle, autoclavable	●	●	○	●	○	AFFINIS light body / fast AFFINIS regular body / fast	19
	Latest generation with especially good flow properties, metallic colour (gold and silver) for improved readability, autoclavable	●	●	○	●	○	AFFINIS PRECIOUS light body AFFINIS PRECIOUS regular body	20
	Classical A-Silicone, low and medium viscosity, surface-activated, from the tube or cartridge	●	○	○	●	○	PRESIDENT light body PRESIDENT regular body	23
<b>Tray material</b>	Premium putty from 380 ml cartridge, smooth consistency with high final hardness, autoclavable	●	●	○	○	○	AFFINIS putty	22
	Smooth consistency from the pot with medium final hardness, autoclavable	●	●	○	○	○	AFFINIS putty soft / fast	22

**INDICATION  
PRODUCT TYPE**

**FIELD OF APPLICATION  
PROPERTIES**

**PRODUCT NAME**

		2S	1S	MP	FUI	FI		
<b>Tray material</b>	Especially smooth consistency from the pot with medium final hardness, autoclavable	●	●	○	○	○	AFFINIS putty super soft	22
	Viscous consistency from the cartridge with medium final hardness, innovative surface affinity, autoclavable	○	●	○	●	●	AFFINIS heavy body/fast	21
	Classical putty from the pot, smooth consistency with high final hardness	●	●	○	○	○	PRESIDENT putty	24
	Smooth consistency from the pot with medium final hardness	●	●	○	○	○	PRESIDENT putty soft/fast	24
	Viscous consistency from the cartridge with medium final hardness	○	●	○	●	●	PRESIDENT heavy body	24
<b>Monophase material</b>	Medium viscosity consistency with low final hardness, specifically for single phase impressions	●	●	●	●	●	AFFINIS MonoBody	21
<b>C-SILICONE</b>								
<b>Wash material</b>	Premium C-Silicone with A-Silicone quality, low to medium viscosity consistency, 7-day dimensional stability, variable setting time by dosing the activator, surface-active	●	●	○	●	○	SPEEDEX light SPEEDEX medium	28
	Low viscosity wash material, outstanding mixing control with colour change during mixing, special application aid	●	●	○	●	○	Rapid Liner	29
	Classical C-Silicone family with four different consistencies for every indication	●	●	○	●	○	Coltex extrafine, Coltex fine Coltex medium	30
<b>Tray material</b>	Premium C-Silicone putty from the pot	●	●	○	○	○	SPEEDEX putty	28
	Classical putty in the system pack	●	●	○	○	○	Rapid putty	29
	Classical putty in the system pack, smooth consistency with low final hardness	●	●	○	○	○	Rapid putty soft	29
	Classical putty with high final hardness	●	●	○	○	○	Coltoflax putty	30
	Classical putty	●	●	○	○	○	Coltex compact	
<b>Activator</b>						SPEEDEX, Rapid, Rapid Liner, Coltex mix, Coltoflax mix, Coltex extrafine mix, PSI Cat.	31	
<b>Accessories</b>						A-Silicone, C-Silicone	25	

**IMPRESSION TECHNIQUE**

- 2S Two-step impression
- 1S One-step impression
- MP Monophase impression
- FUI Functional impression
- FI Fixation impression

**INDICATION  
PRODUCT TYPE**

**FIELD OF APPLICATION  
PROPERTIES**

**PRODUCT NAME**

## PRESSURE-SPOT IDENTIFICATION

### C-SILICONE

Ideal material based on polysiloxane for simple and reliable identification of pressure spots	Pressure Spot Indicator – PSI	30
Activator	PSI CATALYST	30

## LABORATORY

### GINGIVA REPRODUCTION

<b>A-Silicone</b>	A-Silicone gingival mask from the Automix cartridge for precise registration of the gingival contours, natural and aesthetic colouring	GI-MASK Automix New Formula	34
<b>C-Silicone</b>	C-Silicone, gingival mask, Handmix	GI-MASK	

### LABORATORY SILICONES

<b>Silicone putty</b>	Silicone putty with high final hardness, for keys, stamps and block-outs	Lab-Putty	35
	Silicone putty with a very high final hardness of approx. 90 Shore A, high heat resistance (300°), for fabricating soldering models	Lab-Putty hard	35

### WAXES

<b>Modelling and plate waxes Bite rims and templates</b>	Modelling and plate waxes, bite rims and templates in horseshoe shape. For protecting the functional margin or expanding the impression tray and for model fabrication	HYGENIC waxes	37
--	--	---------------	----



# Gingiva Retraction

Impregnation

Retraction Cords

# Prosthetics

**ROEKO Comprecord**

Comprecord is an air texturized retraction cord with a stable structure and a great total volume which makes Comprecord highly absorbent. The cord has a pliable structure that allows Comprecord to adapt easily to the sulcus without fraying and shedding fibers.



**Advantages of Comprecord:**

- pliable structure
- outstanding absorbency
- easy to place in the sulcus
- does not fray and shed fibers
- color coded for easy distinction of sizes

Non impregnated, 225 cm		
0	x-fine	515 000
1	fine	515 001
2	medium	515 002
3	thick	515 003

**ROEKO Retracto**



Braided		
Impregnated with aluminium chloride hexahydrate, 225 cm		
1	fine	510 001
2	medium	510 002
3	thick	510 003

Non impregnated, 225 cm		
0	x-fine	511 000
1	fine	511 001
2	medium	511 002
3	thick	511 003

Twisted		
Impregnated with aluminium chloride hexahydrate, 225 cm		
1	fine	522 001
2	medium	522 002
3	thick	522 003

Non impregnated, 225 cm		
0	x-fine	523 000
1	fine	523 001
2	medium	523 002
3	thick	523 003

**ROEKO Stay-put**



Stay-put combines the advantages of a braided retraction cord with the adaptability of a fine metal filament. The pliable core is so effective that the cord is not only easy to place in the sulcus but it stays there.

**Non impregnated, 183 cm**

<b>0</b> x-fine	521 000	<b>2</b> medium	521 002
<b>1</b> fine	521 001	<b>3</b> thick	521 003



Impregnation with aluminium chloride hexahydrate. Stay-put impregnated is colour coded for easy distinction of sizes and to contrast well with the gingiva. Impregnated with aluminium chloride hexahydrate, 183 cm.

**impregnated, 183 cm**

<b>0</b> x-fine	521 020	<b>2</b> medium	521 022
<b>1</b> fine	521 021	<b>3</b> thick	521 023

**ROEKO Retraction Cord Packer**



**Retraction Cord Packer**

Execution smooth	520 000
Execution serrated	520 001

### Magic FoamCord



Magic FoamCord is the first expanding PVS material designed for easy and fast retraction of the sulcus without the potentially traumatic and time consuming packing of retraction cord.

#### Benefits

- Atraumatic method of temporary gingival retraction
- Easy and fast application directly to the sulcus without pressure or packing
- Comfortable to the patient
- No haemostatic chemicals to contaminate the impression site – no need for extensive rinsing
- Outstanding rewtraction for perfect impressions

2 min\*: Foaming action complete; 5 min\*: Material completely cured.  
Total Expansion 160%



Magic FoamCord Intro Kit	6735
Cartridges	2 x 50 ml
Mixing Tips Yellow	30 pcs
Oral Tips Yellow	30 pcs
Comprecap anatomic	45 pcs

Magic FoamCord Refill	6737
Cartridges	2 x 50 ml

System 50 Accessories		
Mixing Tips Yellow	40 pcs	6550
Oral Tips Yellow	100 pcs	6555

**ROEKO Comprecap**



ROEKO Comprecap compression caps stop bleeding naturally – by compression and control moisture. The use is simple and supports impression preparation regardless of the retraction technique.

Set	530 000	Single Sizes	
Content 1/3/5	150 pcs	1	120 pcs 530 008
		1	600 pcs 531 008
		3	120 pcs 530 010
		3	600 pcs 531 010
		5	60 pcs 530 014
		5	400 pcs 531 014



**Comprecap anatomic**

Are anatomically formed compression caps with semicircled shaped spaces on two opposite sides and can therefore be easily placed on adjacent teeth.

Set	531 299	Single Sizes	
Content 1/3/5	120 Stk.	1	120 pcs 531 201
		3	120 pcs 531 203
		5	60 pcs 531 205

**ROEKO Gingiva Liquid**



An astringent, styptic solution with 10% aluminium chloride hexahydrate. No cardiovascular problems as it does not contain Epinephrine. For treatment of the gingiva before taking an impression and to impregnate retraction cords.

ROEKO Gingiva Liquid	524 000
Content	1 × 10 ml

Impression  
A-Silicone

Prosthetics



## AFFINIS®

The innovative surface affinity and optimised flow properties of AFFINIS ensure perfect impressions. The premium A-Silicone excels by virtue of fast wetting of the tooth and gingiva. Even under the most difficult moist conditions, AFFINIS flows outstandingly like a hydrocolloid into the deepest sulcus without applying pressure. Thanks to the self-contouring consistency, air voids are absent and bubbles or distortions can be virtually eliminated. The thixotropic property means that AFFINIS has adequate stability and does not drip from the tooth.

## PRESIDENT®

PRESIDENT the first A-Silicone has impressed for decades with its superior quality as one of COLTENE's traditional products. PRESIDENT wash materials are stable, yet extremely free-flowing under pressure to capture all details cleanly. Impressions are precise, even under the most difficult conditions thanks to their high tear strength.



### Brief description

#### AFFINIS®

**Premium A-Silicone:** top quality  
**Universal product range:** putty, tray, 6 x wash  
**Dosage form in cartridges:** 25 ml, 50 ml, 75 ml, 380 ml  
**Innovative consistencies:** AFFINIS PRECIOUS  
**Optimal flow properties:** top precision  
**Top dimensional stability:** fitting accuracy  
**Automix:** simple handling  
**Autoclavable:** protection against infections  
**Smallest contact angle:** best wettability

#### PRESIDENT®

**Classical A-Silicone:** continuously optimised  
**Two forms of mixing:** Automix und Handmix  
**Top dimensional stability:** high quality  
**Optimal flow properties:** high precision  
**Dosage form in cartridges:** 25 ml, 50 ml, 75 ml, 380 ml  
**Dosage form in tubes:** Base and Activator each 53 ml

### Consistencies

#### WASH

light body  
 light body fast  
 PRECIOUS light body  
 regular body  
 regular body fast  
 PRECIOUS regular body

#### TRAY

MonoBody  
 heavy body  
 heavy body fast  
 putty soft  
 putty super soft  
 putty soft fast  
 putty System 360

#### WASH

light body  
 regular body

#### TRAY

heavy body  
 putty  
 putty soft  
 putty soft fast

JET BLUE BITE



**Exceptional Handling with firm, accurate, fast set**

JET BLUE BITE bite registration material flows with a smooth whipped-cream consistency exactly where you want it in a predictable quantity and ideal ribbon pattern. It offers a fast oral setting-time and sets rock hard for greater accuracy but is still flexible enough for easy trimming or cutting. The superior handling characteristics are the key for a perfect occlusal fit on the first try.

- Stays exactly where you want it
- No resistance to closure, no rebound!
- Rock hard for accuracy, yet flexible for easy trimming
- Pick your ideal speed:

**Fast** 30 s working time  
40 s oral setting time

**Superfast** 20 s working time  
30 s oral setting time

JET BLUE BITE fast



JET BLUE BITE fast 50 ml Single Pack	6491
Cartridge	1 × 50 ml
Mixing Tips Pink	6 pcs
Spreader Tips	6 pcs

JET BLUE BITE fast 50 ml Refill	6495
Cartridge	4 × 50 ml
Mixing Tips Pink	12 pcs
Spreader Tips	12 pcs

JET BLUE BITE superfast



JET BLUE BITE superfast 50 ml Single Pack	6493
Cartridge	1 × 50 ml
Mixing Tips Pink	6 pcs
Spreader Tips	6 pcs

JET BLUE BITE superfast 50 ml Refill	6497
Cartridge	4 × 50 ml
Mixing Tips Pink	12 pcs
Spreader Tips	12 pcs



**Jet Bite**



Easy handling and ideal stability facilitate the bite registration. The dental technician appreciates how well the material can be formed and trimmed.

Jet Bite microSystem	6440
Cartridges	4 × 25 ml
Mixing Tips Clear	20 pcs
Spreader Tips	20 pcs

Jet Bite microSystem	6450
Refill package cartridges	20 × 25 ml

Jet Bite 50 ml	6400
Cartridges	2 × 50 ml
Mixing Tips Pink	12 pcs
Spreader Tips	12 pcs

Jet Bite 50 ml	6410
Refill package cartridges	20 × 50 ml

**Jet Bite Accessories**



microSystem		
microSystem Dispenser MK II	1 pc	6270
Mixing Tips Clear	40 pcs	6214
Mixing Tips Clear	100 pcs	6215
Spreader Tips	100 pcs	6223

50 ml System		
Dispenser 50/75 ml	1 pc	6900
Mixing Tips Pink	40 pcs	6551
Spreader Tips	100 pcs	6223



*Affinity on moist tooth structure*

**AFFINIS – a bench mark in impression technology**

AFFINIS, an A-Silicone, differs in three characteristic features from other surface activated impression materials:

**Innovative surface affinity**

The differentiating element of AFFINIS is a fast and innovative affinity of mixed material to moist tooth structure and tissue (gingiva).

**Optimized flow**

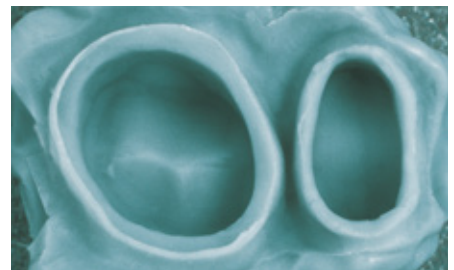
AFFINIS however, based on its surpassing combination of additives which are capable of breaking material structures, displays a very low barrier to flow (self-contouring consistency) At the same time, the mixed material is optimal thixotropic not to drip off the preparation.

**Better models**

AFFINIS, due to its synergistic and extremely active surfactant system, displays a fast and outstanding wetting by water of the set impression. When pouring the gypsum, the dental technician will appreciate these properties.

**First Ever Autoclavable Impressions**

All AFFINIS and AFFINIS PRECIOUS impressions are now autoclavable at 134°C without the loss of its well-known and appreciated AFFINIS physical properties. The new autoclavable AFFINIS impression material with a heat-resistant impression tray and special adhesive provides an integrated system for completely new possibilities in prevention. AFFINIS impressions – not only clean, but also sterile.



*A no void AFFINIS impression as seen by the dentist*

**AFFINIS light body**



<b>AFFINIS light body microSystem</b>	<b>6500</b>
Cartridges	4 × 25 ml
Mixing Tips Green	20 pcs
Oral Tips	20 pcs

<b>AFFINIS light body 50 ml</b>	<b>6501</b>
Cartridges	2 × 50 ml
Mixing Tips Yellow	12 pcs

<b>AFFINIS light body microSystem</b>	<b>6575</b>
Refill package cartridges	20 × 25 ml

<b>AFFINIS light body 50 ml</b>	<b>6580</b>
Refill package cartridges	20 × 50 ml

**AFFINIS fast light body**



<b>AFFINIS fast light body microSystem</b>	<b>6600</b>
Cartridges	4 × 25 ml
Mixing Tips Green	20 pcs
Oral Tips	20 pcs

<b>AFFINIS fast light body 50 ml</b>	<b>6601</b>
Cartridges	2 × 50 ml
Mixing Tips Yellow	12 pcs

<b>AFFINIS fast light body microSystem</b>	<b>6675</b>
Refill package cartridges	20 × 25 ml

<b>AFFINIS fast light body 50 ml</b>	<b>6680</b>
Refill package cartridges	20 × 50 ml

**AFFINIS regular body**



<b>AFFINIS regular body microSystem</b>	<b>6510</b>
Cartridges	4 × 25 ml
Mixing Tips Clear	20 pcs
Oral Tips	20 pcs

<b>AFFINIS regular body 50 ml</b>	<b>6511</b>
Cartridges	2 × 50 ml
Mixing Tips Yellow	12 pcs

<b>AFFINIS regular body microSystem</b>	<b>6577</b>
Refill package cartridges	20 × 25 ml

<b>AFFINIS regular body 50 ml</b>	<b>6582</b>
Refill package cartridges	20 × 50 ml

**AFFINIS fast regular body**



<b>AFFINIS fast regular body microSystem</b>	<b>6610</b>
Cartridges	4 × 25 ml
Mixing Tips Clear	20 pcs
Oral Tips	20 pcs

<b>AFFINIS fast regular body 50 ml</b>	<b>6611</b>
Cartridges	2 × 50 ml
Mixing Tips Yellow	12 pcs

<b>AFFINIS fast regular body microSystem</b>	<b>6677</b>
Refill package cartridges	20 × 25 ml

<b>AFFINIS fast regular body 50 ml</b>	<b>6682</b>
Refill package cartridges	20 × 50 ml

**AFFINIS PRECIOUS**

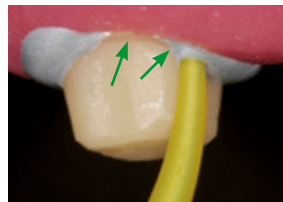


**Superior flow properties where it counts – In the mouth...**

AFFINIS PRECIOUS polyvinylsiloxane (PVS) wash materials have a contact angle of only 10°. Its superior flow properties allow the impression material to easily capture all critical surface detail of the preparations in a wet environment.

**...and in the lab**

AFFINIS PRECIOUS was developed to produce accurate results in the mouth and in the lab. The wettability allows the wet gypsum to flow more easily into the impression, producing more accurate stone models. An accurate model is the key for the lab technician to create proper fitting restorations.



*AFFINIS PRECIOUS flows directly into the sulcus preventing air entrapments.*



*Thixotropic properties prevent slumping and dripping.*



*AFFINIS PRECIOUS wash materials produce accurate, void free impressions.*

**AFFINIS PRECIOUS  
light body / regular body**



<b>AFFINIS PRECIOUS light body 50 ml</b>	<b>6775</b>
Cartridges	2 × 50 ml
Mixing Tips Yellow	12 pcs

<b>AFFINIS PRECIOUS regular body 50 ml</b>	<b>6776</b>
Cartridges	2 × 50 ml
Mixing Tips Yellow	12 pcs

<b>AFFINIS PRECIOUS light body mS 25 ml</b>	<b>6779</b>
Cartridges microSystem	4 × 25 ml
Mixing Tips Green	20 pcs
Oral Tips	20 pcs

<b>AFFINIS PRECIOUS regular body mS 25 ml</b>	<b>6780</b>
Cartridges microSystem	4 × 25 ml
Mixing Tips Clear	20 pcs
Oral Tips	20 pcs

**AFFINIS MonoBody**



AFFINIS MonoBody is tissue friendly and neutral in taste without side effects or patient discomfort. After a short oral setting time of 3.30 min the AFFINIS impression can be easily removed without residue or distortion. The impression is desinfectable without dimensional changes. The high elastic recovery of 99.75 % and dimensional change of just 0.2% are the essential characteristics for accurate restorations.

<b>AFFINIS MonoBody 75 ml</b>	<b>6547</b>
Cartridges	2 × 75 ml
Mixing Tips Turquoise	8 pcs

<b>AFFINIS MonoBody 75 ml</b>	<b>6587</b>
Refill package cartridges	20 × 75 ml

<b>AFFINIS System 360 MonoBody Starter Kit</b>	<b>6480</b>
Base und Catalyst	1 × 380 ml
Fixation Ring	1 pc
Dynamic Mixing Tips Yellow	10 pcs

<b>AFFINIS System 360 MonoBody</b>	<b>6482</b>
Refill package Base und Catalyst	2 × 380 ml
Fixation Ring	1 pc

**AFFINIS heavy body**



With its surface affinity technologie and its ideal thixotropic characteristics AFFINIS heavy body builds up an ideal intraoral pressure, that which drives material easily into all critical areas.

<b>AFFINIS heavy body 75 ml</b>	<b>6520</b>
Single pack Cartridges	2 × 75 ml
Mixing Tips Turquoise	8 pcs

<b>AFFINIS heavy body 75 ml</b>	<b>6585</b>
Refill package cartridges	20 × 75 ml

<b>AFFINIS heavy body 50 ml</b>	<b>6590</b>
Single pack Cartridges	2 × 50 ml
Mixing Tips Turquoise	6 pcs

<b>AFFINIS heavy body 50 ml</b>	<b>6595</b>
Refill package cartridges	20 × 50 ml

<b>AFFINIS System 360 heavy body Starter Kit</b>	<b>6485</b>
Base und Catalyst	1 × 380 ml
Fixation Ring	1 pc
Dynamic Mixing Tips Yellow	10 pcs

<b>AFFINIS System 360 heavy body</b>	<b>6487</b>
Refill package Base und Catalyst	2 × 380 ml
Fixation Ring	1 pc

**AFFINIS fast heavy body**



<b>AFFINIS fast heavy body 75 ml</b>	<b>6620</b>
Cartridges	2 × 75 ml
Mixing Tips Turquoise	8 pcs

<b>AFFINIS fast heavy body 75 ml</b>	<b>6685</b>
Refill package cartridges	20 × 75 ml

<b>AFFINIS fast heavy body 50 ml</b>	<b>6650</b>
Single pack Cartridges	2 × 50 ml
Mixing Tips Turquoise	6 pcs

<b>AFFINIS fast heavy body 50 ml</b>	<b>6652</b>
Refill package cartridges	20 × 50 ml

**AFFINIS System 360 putty**



The new AFFINIS System 360 putty is truly kneadable, whose strong “firm body” is immediately noticeable once dispensed from the mixing unit with no signs of stickiness. The putty material can be manually-kneaded immediately in the hands without sticking to the gloves. This facilitates individual pre-forming of the tray material based on the clinical situation. The dentist is comforted with a reliable, automatically-mixed putty material for successful precision impressions.

AFFINIS System 360 putty Starter Kit		6471
Base und Catalyst	1 × 380 ml	
Fixation Ring	1 pc	
Dynamic Mixing Tips Yellow	10 pcs	

AFFINIS System 360 putty Single Pack		6472
Refill package Base and Catalyst	2 × 380 ml	
Fixation Ring	1 pc	

**AFFINIS putty soft / fast**



AFFINIS putty soft is a standard putty in the AFFINIS putty range. The compatible consistencies of the base and catalyst ensure for quick and easy mixing.

AFFINIS putty soft		6530
Base und Catalyst	2 × 300 ml	

AFFINIS fast putty soft		6531
Base und Catalyst	2 × 300 ml	

**AFFINIS putty super soft**



AFFINIS putty super soft is smooth, quick and easy to mix. With a viscosity similar to heavy body, formulated to flow and guide AFFINIS wash materials accurately to clinically important surfaces and with ideal mixing and oral setting times, the putty achieves perfect impressions without voids and margin distortions.

AFFINIS putty super soft		6535
Base und Catalyst	2 × 300 ml	



System 50/75 Accessories		
Dispenser 50/75 ml	1 pc	6900
Mixing Tips Yellow	40 pcs	6550
Mixing Tips Pink	40 pcs	6551
Mixing Tips Turquoise	40 pcs	6552
Oral Tips Yellow	100 pcs	6555
Spreader Tips	100 pcs	6223
Plunger, 75 ml	1 pcs	6985

microSystem Accessories		
microSystem Dispenser MK II	1 pc	6270
Mixing Tips Clear	40 pcs	6214
Mixing Tips Clear	100 pcs	6215
Mixing Tips Green	40 pcs	6202
Mixing Tips Green	100 pcs	6205
Oral Tips	100 pcs	6210
Spreader Tips	100 pcs	6223

System 360 Accessories		
Dynamic Mixing Tips Yellow	40 pcs	6162

AFFINIS fast putty soft		
Fixation Ring	1 pc	6163

**PRESIDENT light body**



PRESIDENT microSystem light body	6002
Cartridges	4 × 25 ml
Mixing Tips Green	20 pcs
Oral Tips	20 pcs

PRESIDENT light body	4626
Cartridges	2 × 50 ml
Mixing Tips Yellow	12 pcs

PRESIDENT microSystem light body	6005
Refill package cartridges	20 × 25 ml

PRESIDENT light body tube material	4667
Base und Catalyst	2 × 53 ml

**PRESIDENT regular body**



PRESIDENT microSystem regular body	6012
Cartridges	4 × 25 ml
Mixing Tips Clear	20 pcs
Oral Tips	20 pcs

PRESIDENT regular body	4627
Cartridges	2 × 50 ml
Mixing Tips Yellow	12 pcs

PRESIDENT microSystem regular body	6015
Refill package cartridges	20 × 25 ml

**PRESIDENT Putties**



<b>PRESIDENT putty</b>	<b>4617</b>
Base und Catalyst	2 × 300 ml

<b>PRESIDENT putty soft</b>	<b>4843</b>
Base und Catalyst	2 × 300 ml

<b>PRESIDENT fast putty soft</b>	<b>4632</b>
Base und Catalyst	2 × 300 ml

**PRESIDENT heavy body**

PRESIDENT heavy body is surface-activated and thixotropic with fast pressure build up so that the wash material is easily driven into the critical areas.



<b>PRESIDENT heavy body 75 ml</b>	<b>6712</b>
Cartridges	2 × 75 ml
Mixing Tips Turquoise	8 pcs

<b>PRESIDENT heavy body 75 ml</b>	<b>6715</b>
Refill packages cartridges	20 × 75 ml

<b>PRESIDENT System 360 heavy body Starter Kit</b>	<b>6100</b>
Base und Catalyst	1 × 380 ml
Fixation Ring	1 pc
Dynamic Mixing Tips Yellow	10 pcs

<b>PRESIDENT System 360 heavy body</b>	<b>6105</b>
Base und Catalyst	2 × 380 ml
Fixation Ring	1 pc

**PRESIDENT tube material**



<b>PRESIDENT heavy body tube material</b>	<b>4767</b>
Base und Catalyst	2 × 53 ml

<b>PRESIDENT light body tube material</b>	<b>4667</b>
Base und Catalyst	2 × 53 ml

<b>PRESIDENT regular body tube material</b>	<b>4717</b>
Base und Catalyst	2 × 53 ml



**PRESIDENT Impression Tray and Accessories**

A patented system of intersecting ribs and rails provides unprecedented rigidity in a plastic tray. The anatomic form releases the fitting and ensures a perfect impression.

PRESIDENT Impression Tray (transparent)					
<b>Size 1</b> upper jaw large	12 pcs	C6901	<b>Size 6</b> lower jaw small	12 pcs	C6906
<b>Size 2</b> lower jaw large	12 pcs	C6902	<b>Size 7</b> quadrant UJ le./LJ ri.	12 pcs	C6907
<b>Size 3</b> upper jaw medium	12 pcs	C6903	<b>Size 8</b> quadrant UJ ri./LJ le.	12 pcs	C6908
<b>Size 4</b> lower jaw medium	12 pcs	C6904	<b>Size 9</b> anterior UJ/LJ	12 pcs	C6909
<b>Size 5</b> Upper jaw small	12 pcs	C6905			

PRESIDENT Impression Tray autoclavable (blue)					
<b>Size 1</b> upper jaw large AC	12 pcs	C6950	<b>Size 6</b> lower jaw small AC	12 pcs	C6955
<b>Size 2</b> lower jaw large AC	12 pcs	C6951	<b>Size 7</b> quadrant UJ le./LJ ri. AC	12 pcs	C6956
<b>Size 3</b> upper jaw medium AC	12 pcs	C6952	<b>Size 8</b> quadrant UJ ri./LJ le. AC	12 pcs	C6957
<b>Size 4</b> lower jaw medium AC	12 pcs	C6953	<b>Size 9</b> anterior UJ/LJ AC	12 pcs	C6958
<b>Size 5</b> upper jaw small AC	12 pcs	C6954			

Coltopress		4422
Squeezing aid for tubes. Coltopress empties tubes without waste.		

Impression Syringes		4426			4428
Impression syringes incl. 15 tips	3 pcs		Refill package tips		50 pcs

Adhesive		4410	Adhesive AC		4405
Bottle	1 x 10 ml		Bottle, autoclavable		1 x 10 ml

Mixing Pad		4412	Mixing Pads		4414
		1 pc			10 pcs

Spatula		4415	Cutting Knife		4420
		1 pc	Universal		1 pc

System 50/75 Accessories			microSystem Accessories		
Dispenser 50/75 ml	1 pc	6900	microSystem Dispenser MKII	1 pc	6270
Mixing Tips Yellow	40 pcs	6550	Mixing Tips Clear	40 pcs	6214
Mixing Tips Pink	40 pcs	6551	Mixing Tips Clear	100 pcs	6215
Mixing Tips Turquoise	40 pcs	6552	Mixing Tips Green	40 pcs	6202
Oral Tips Yellow	100 pcs	6555	Mixing Tips Green	100 pcs	6205
Spreader Tips	100 pcs	6223	Oral Tips	100 pcs	6210
Plunger	1 pc	6985	Spreader Tips	100 pcs	6223

System 360 Accessories					
Dynamic Mixing Tips Yellow	40 pcs	6162	Fixation Ring		1 pcs 6163



Impression

C-Silicone

Prosthetics

## SPEEDEX®

SPEEDEX is a premium C-Silicone in A-quality. SPEEDEX has elastic recoverability and reproduction, which is otherwise only achieved by A-Silicones. As a result of the low shrinkage, impressions remain dimensionally stable and can be cast for up to 7 days without problems.

All consistencies of SPEEDEX are mixed with a Universal Activator. Processing is flexible by means of underdosing or overdosing. After just two minutes in the mouth the impression is fully set.



## RAPID

Rapid, the C-Silicone with colour change for outstanding mixing control. The special wash material Rapid Liner changes colour with successful mixing. Dependable mixing and the practical dispensing system simplify precise impression-taking.

## COLTOFLAX® / COLTEX®

With Coltoflax/Coltex began the success story of COLTENE silicones. A putty and four different consistencies, Coltoflax/Coltex offer an extensive product range. The right material for every indication and high quality are the factors that assure the right impression.



### Brief description

#### SPEEDEX®

**C-Silicone in A-Quality:** top quality of the C-Silicones  
**High dimensional stability:** up to 7 days  
**Variable processing time:** depending on dosage of the activator

#### RAPID

**Basic product range:** 2 x putty, 1 x wash  
**Mixing control:** colour change during mixing

#### COLTOFLAX® / COLTEX®

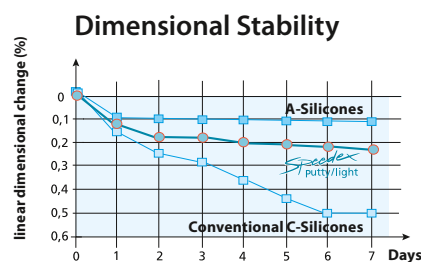
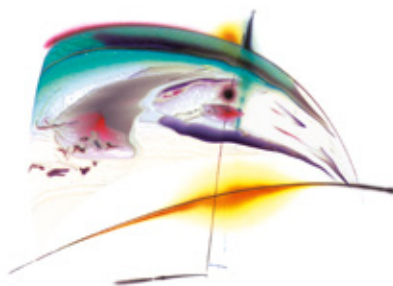
**First silicone from COLTENE:** for every indication  
**Extensive range:** 1 x putty, 4 x different consistencies

### Consistencies

	WASH	TRAY
<b>SPEEDEX®</b>	light body medium body	putty
<b>RAPID</b>	Rapid Liner	Rapid Rapid soft
<b>COLTOFLAX® / COLTEX®</b>	Coltex extrafine Coltex fine Coltex medium	Coltoflax Coltex compact

Speedex

Speedex medium has outstanding wettability and excellent flow characteristics. Saliva and blood are displaced by Speedex medium and have no negative side effects. With the variable setting time of Speedex medium the important mucosal movements, which are necessary for the full and partial denture technique, can be taken very precisely. A perfect impression is the key for an accurate fitting denture.



High dimensional stability:  
models can be poured up to seven days after impression taking.

<b>Speedex putty</b>	<b>4970</b>
Single Package	910 ml
<b>Speedex medium body</b>	<b>4986</b>
Single Package	140 ml

<b>Speedex light body</b>	<b>4980</b>
Single Package	140 ml
<b>Speedex Universal Activator</b>	<b>4990</b>
Single Package	60 ml

**Rapid**

Simplicity and rationality are the trademarks of COLTENE Rapid. COLTENE Rapid provides the appropriate material for every application. And in addition, unparalleled aids ensuring excellent and reliable application of all system components. Optimal homogeneous control thanks to color change driving mixing.



<b>Rapid</b>	<b>4515</b>
Putty	1 × 900 ml
Rapid Activator	1 × 40 ml
Dosing Spoon	1 pc

<b>Rapid Activator</b>	<b>4530</b>
Activator	1 × 40 ml

<b>Rapid Liner</b>	<b>4540</b>
Liner	1 × 150 ml
Liner Activator	1 × 18 ml
Dosing Syringe	2 pcs
Applicator	1 pc
Mixing Rod	1 pc.

<b>Rapid Liner without applicator</b>	<b>4541</b>
Liner	1 × 150 ml
Liner Activator	1 × 18 ml
Dosing Syringe	2 pcs

<b>Rapid Soft</b>	<b>4590</b>
Putty	1 × 900 ml
Rapid Activator	1 × 40 ml
Dosing Spoon	1 pc

<b>Rapid Liner Eco</b>	<b>4547</b>
Liner	3 × 150 ml
Liner Activator	3 × 18 ml

<b>Rapid Liner Activator</b>	<b>4550</b>
Liner Activator	1 × 18 ml

**Coltoflax / Coltex**



Coltoflax/Coltex offers you one putty material and 4 different materials in tubes. That means: you are completely free to choose the impression technique that suits you best. Easy handling characteristics, excellent physical properties and consistent quality are the features that guarantee successful impression results with Coltoflax/Coltex.

<b>Coltoflax (Base und Activator)</b>	<b>4015</b>
Single Package	1 × 950 ml

<b>Coltoflax Activator Paste</b>	<b>4046</b>
Coltoflax mix	1 × 40 ml

<b>Coltex extrafine</b>	<b>4115</b>
Single Package	1 × 160 ml

<b>Coltex extrafine mix</b>	<b>4142</b>
Coltex extrafine mix	1 × 20 ml

<b>Coltex fine</b>	<b>4165</b>
Single Package	1 × 165 ml

<b>Coltex mix</b>	<b>4392</b>
Coltex mix	1 × 40 ml

<b>Coltex medium</b>	<b>4215</b>
Single Package	1 × 165 ml

<b>Coltex compact</b>	<b>4365</b>
Single Package	1 × 165 ml

**Pressure Spot Indicator**



The polysiloxane-based material for the location of high spots in dentures.

<b>PSI</b>	<b>4440</b>
Catalyst	1 × 20 ml
Base	1 × 55 ml

<b>PSI CATALYST</b>	<b>4445</b>
Catalyst	1 × 20 ml

Accessories see page 25

**Speedex**



<b>Speedex Universal Activator</b>	<b>4990</b>
Single Package	1 × 60 ml

**Rapid**



<b>Rapid Activator</b>	<b>4530</b>
Activator	1 × 40 ml

<b>Rapid Liner Activator</b>	<b>4550</b>
Liner Activator	1 × 18 ml

<b>Rapid Liner Eco</b>	<b>4547</b>
Liner	3 × 18 ml

**Coltex / Coltoflax**



<b>Coltex mix</b>	<b>4392</b>
Coltex mix	1 × 40 ml

<b>Coltex extrafine mix</b>	<b>4142</b>
Coltex extrafine mix	1 × 20 ml

<b>Coltoflax Activator Paste</b>	<b>4046</b>
Coltoflax mix	1 × 40 ml

**PSI CATALYST**



<b>PSI CATALYST</b>	<b>4445</b>
Catalyst	1 × 20 ml

# Gingiva Reproduction

Lab silicones

**Laboratory / Practice**





**GI-MASK Automix New Formula**



GI-MASK Automix New Formula provides accurate reproduction of soft tissue structure. The A-Silicone based gingival mask provides all information for implant supra-structures and frameworks. The aesthetic colouring of the gingival mask supports you to imagine the clinical situation.

Starter-Kit		8060
GI-MASK New Formula cartridges	2 × 50 ml	
GI-MASK Universal Separator	1 × 50 ml	
Mixing Tips Yellow	12 pcs	
Oral Tips Yellow	12 pcs	
Trimmer for Silicones	1 ps	

Refill		8065
GI-MASK New Formula cartridges	2 × 50 ml	
Mixing Tips Yellow	12 pcs	
Oral Tips Yellow	12 pcs	

Accessories		
Mixing Tips Yellow	40 pcs	6550
Oral Tips Yellow	100 pcs	6555
Dispenser 50 ml/75 ml	1 pc	6900
Trimmer for Silicones	1 pc	8075

Separator		8000
GI-MASK Universal Separator	1 × 50 ml	

**GI-MASK**



The GI-MASK is the silicone-based gingival mask, for precise reproduction of gingival contours around the margins, it maintains its accuracy for days and right up to the moment until the restoration is finished.

Starter-Kit		8030
GI-MASK Base	1 × 150 ml	
GI-MASK Activator	1 × 18 ml	
GI-MASK Universal Separator	1 × 50 ml	
Mixing Tips	3 pcs	
Mixing and application accessories		

Single Package		8035
GI-MASK Base	1 × 150 ml	
GI-MASK Activator	1 × 18 ml	
Mixing Tips	3 pcs	
Mixing and application accessories		

Refill Kit		8037
Base	1 × 150 ml	
Activator	1 × 18 ml	

Separator		8000
GI-MASK Universal Separator	1 × 50 ml	

Activator		8036
GI-MASK Activator	1 × 18 ml	

**Lab-Putty**



Lab-Putty is the outstanding polysiloxane laboratory modelling product material with 62 – 67 Shore A for model repairs, isolation and denture heat protection, keys and block outs and matrixes for formation of general occlusion and functional patterns.

Lab-Putty 1.35 kg 8805	
Lab-Putty Base	1 × 900 ml
Lab-Putty Activator	1 × 40 ml
Dosing spoon	1 pc

Lab-Putty 7.5 kg 8815	
Lab-Putty Base	1 × 5000 ml
Dosing spoon	5 pcs

Lab-Putty Activator 8840	
Activator	1 × 40 ml

**Lab-Putty hard**



A smooth acrylic surface is guaranteed with the use of Lab Putty hard for relining, keys and repair models. Separate isolation is eliminated. Its high heat-resistance (300° C) and perfect dimensional stability makes it suitable for soldering models (90 Shore A).

Lab-Putty hard 1.8 kg 8882	
Lab-Putty hard Base	1 × 900 ml
Activator	1 × 40 ml
Dosing spoon	1 pcs

Lab-Putty hard 5 kg 8880	
Lab-Putty hard Base	1 × 2600 ml
Dosing spoon	5 pcs

Lab-Putty Activator 8840	
Activator	1 × 40 ml

Wax

Laboratory / Practice

**HYGENIC u-shaped occlusal rim wax**



Recessed base aids adaption to base plate. Can be reshaped at room temperature to fit individual arch.

HYGENIC u-shaped occlusal rim wax		
Standard Package	21 pcs	H04030
Laboratory Package	100 pcs	H00822

**HYGENIC bite-wafers**



This bite-mask contains a thin aluminium foil within two wax layers. Laminated, blue.

HYGENIC bite-wafers		
Double	24 pcs	H00825

U-shaped and designed for a fast precise retain of the situation.

HYGENIC bite-wafers		
Yellow, soft	50 pcs	H00839
Green, hard	50 pcs.	H03365

**HYGENIC medium-soft no. 3 pink wax**



Easily softened and cooled to minimize shrinkage. Soft modeling.

HYGENIC medium-soft no. 3 pink wax	
450 g	H00806
2.25 kg	H00812

**HYGENIC red wax**

This wax shows the same consistency as the medium-soft no. 3 pink wax.

HYGENIC red wax	
450 g	H00805
2.25 kg	H00811

**HYGENIC extra tough wax**



Durable, all-purpose wax that is a carefully prepared blend of exclusive waxes. Tough, pliable and sufficiently tacky to hold teeth well. Takes polish and boils out.

HYGENIC extra tough wax	
450 g	H00803
2.25 kg	H00809

**HYGENIC yellow bite wax**



Economical alternative to Beeswax with many of the same characteristics.

HYGENIC yellow bite wax	
450 g	H00807
2.25 kg	H00813

**HYGENIC square wax ropes**



Sticky, soft and narrow wax ropes.

HYGENIC square wax ropes		
4.8 mm <sup>2</sup> × 279 mm Red	44 pcs	H00819
4.8 mm <sup>2</sup> × 279 mm White	44 pcs	H00820

**HYGENIC round wax strips**



Shaped in round strips, used for preserving the periphery roll and extending and building up impression trays and post-damming.

HYGENIC round wax strips		
4.8 mm <sup>2</sup> × 279 mm Red	80 pcs	H00817
4.8 mm <sup>2</sup> × 279 mm White	80 pcs	H00818

**HYGENIC wax sticks**



Readily formed without heating, sticks are softer and tackier than „Round Wax Strips“ to minimize tissue displacement.

HYGENIC wax sticks		
Scented	48 pcs	H00826

**HYGENIC boxing wax**



Designed for boxing impressions, withstands extreme heat given off by dental stone during setting.

HYGENIC Boxing wax, regular		HYGENIC boxing waxes, extra fine	
1.6 mm × 38.4 mm × 305 mm 450 g	H00815	1 mm × 38.4 mm × 305 mm 450 g	H00816
1.6 mm × 38.4 mm × 305 mm 2.25 kg	H00837	1 mm × 38.4 mm × 305 mm 2.25 kg	H00838

**HYGENIC beeswax**



Made of pure, natural beeswax with no additives. Wax softens easily under hot water.

HYGENIC beeswax		
225 g	48 pcs	H00832
450 g	48 pcs	H00833
2.25 kg	48 pcs	H00834

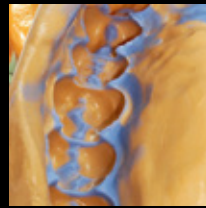
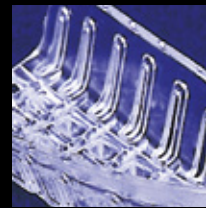
**HYGENIC orthodontic tray wax**



Sticky, soft and narrow wax ropes.

HYGENIC Orthodontic Tray Wax Sticks		
White	48 pcs	H00827





**CH** **Coltène/Whaledent AG**  
 Feldwiesenstrasse 20  
 9450 Altstätten / Switzerland  
 T + 41 71 757 53 00  
 F + 41 71 757 53 01  
 info.ch@coltene.com

**CN** **Coltene/Whaledent China Trading Co. Ltd.**  
 Rm. 1103/1104, Bldg. B2, Wu Dong Plaza  
 #9 Chegongzhuang Street, West District  
 Beijing 100044 / P.R. China  
 T + 86 10 6212 3251  
 F + 86 10 6212 3252  
 info.cn@coltene.com

**IT** **Coltène Italia S.r.l.**  
 c/o Polo Tecnologico della Brianza  
 Via Alessandro Volta, 94 - Cond. Bianchi  
 20832 Desio (MB) / Italy  
 T + 39 0362 62 67 32  
 F + 39 0362 63 25 80  
 info.it@coltene.com

**DE** **Coltène/Whaledent GmbH + Co. KG**  
 Raiffeisenstraße 30  
 89129 Langenau / Germany  
 T + 49 7345 805 0  
 F + 49 7345 805 201  
 info.de@coltene.com

**FR** **Coltène/Whaledent s.a.r.l.**  
 75 Boulevard Marie et Alexandre Oyon  
 72058 Le Mans Cedex 2 / France  
 T + 33 2 43 39 30 30  
 F + 33 2 43 39 30 40  
 info.fr@coltene.com

**UK** **Coltène/Whaledent Ltd.**  
 The President Suite  
 Kendal House, Burgess Hill  
 Victoria Way  
 West Sussex, RH15 9NF / UK  
 T + 44 1444 235486  
 F + 44 1444 870640  
 info.uk@coltene.com

**US** **Coltène/Whaledent Inc.**  
 235 Ascot Parkway  
 Cuyahoga Falls, Ohio 44223 / USA  
 T + 1 330 916 8800  
 F + 1 330 916 7077  
 info.us@coltene.com

**IN** **Coltène/Whaledent Private Ltd.**  
 106/107, Hallmark, Vasant Oscar  
 L.B.S Marg, Mulund West  
 Mumbai 400080, Maharashtra / India  
 T + 91 22 25923626  
 F + 91 22 25623165  
 info.in@coltene.com

**BR** **Vigodent SA Indústria e Comércio**  
 Rua Pesqueira 26 Bonsucesso  
 Rio de Janeiro CEP 21041-150 / Brazil  
 T + 5521 3865 5600  
 F + 5521 2280 8411  
 sac@vigodent.com.br

© 2015 Coltène/Whaledent AG – www.coltene.com



**COLTENE**

