

UNIVERSAL SUBMICRON HYBRID COMPOSITE

BRILLIANT EverGlow[®]

The glow of the art





THE GLOW OF THE ART

THE DESIRE TO HAVE AN EASY-TO-PROCESS, AESTHETIC AND DURABLE FILLING MATERIAL IS SIGNIFICANT.

BRILLIANT EverGlow is a material that meets the demand without compromise. The state-of-the-art composite is suitable for anterior and posterior restorations and offers the right mix of simple and practical handling, excellent blend-in properties and long-lasting brilliance.

- Exceptional polishability and long-lasting brilliance
- Aesthetic single-shade restorations
- Smooth consistency provides ideal handling
- Good wettability on the conditioned tooth surface



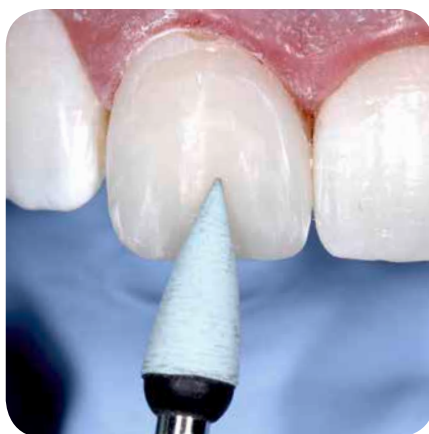
EXCEPTIONAL POLISHABILITY AND LONG-LASTING BRILLIANCE

BRILLIANT EVERGLOW IS A UNIVERSAL SUBMICRON HYBRID COMPOSITE.

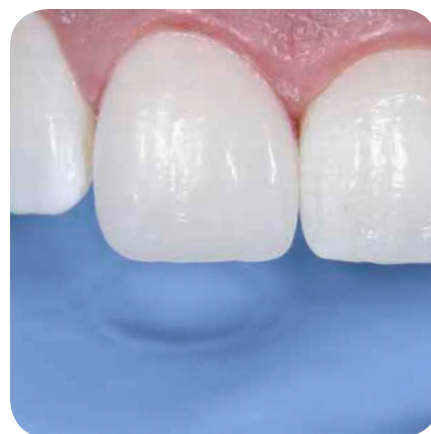
Due to its sophisticated filler composition, BRILLIANT EverGlow immediately shows an exceptionally smooth surface which has a satin shine directly after placing the filling. This makes polishing a minor issue and highly aesthetic restorations can be performed in next to no time. In addition, the versatile filling material excels through its pronounced gloss retention.



Pre-polishing (i.e. with DIATECH COMPREPOL PLUS)



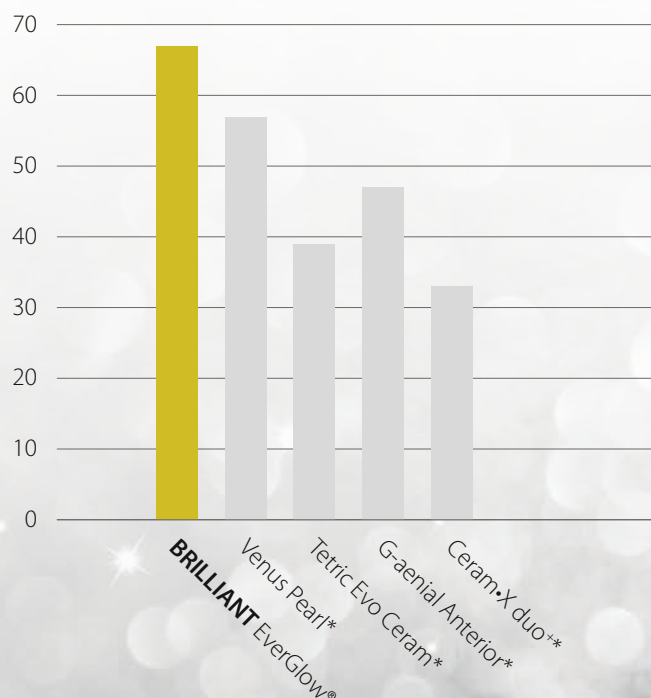
Gloss polish (i.e. with DIATECH COMPOSHINE PLUS)



Easy to polish to a glossy final result instantly

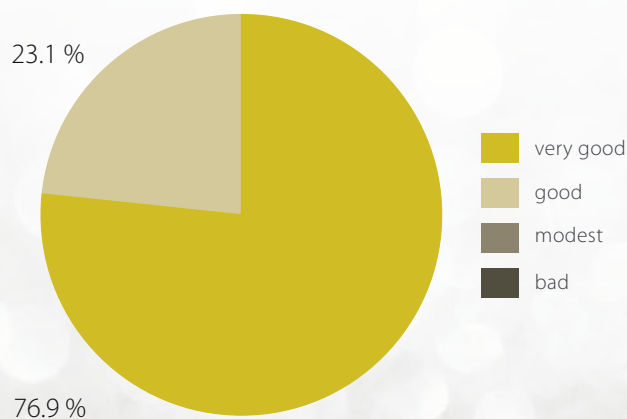
GLOSS RETENTION ¹

After exposure in the toothbrush simulator, measured in gloss units (GU)



Even after loading for 6,000 cycles in a toothbrush simulator, BRILLIANT EverGlow retains its initial gloss very well.

EVALUATION OF POLISHABILITY ¹



A field test with 39 dentists from Europe and the US has confirmed the outstanding polishability of BRILLIANT EverGlow: 100 % of the participants gave a positive judgment, 76.9 % of them giving the highest possible score.

¹Source: internal data | * not a trademark of COLTENE

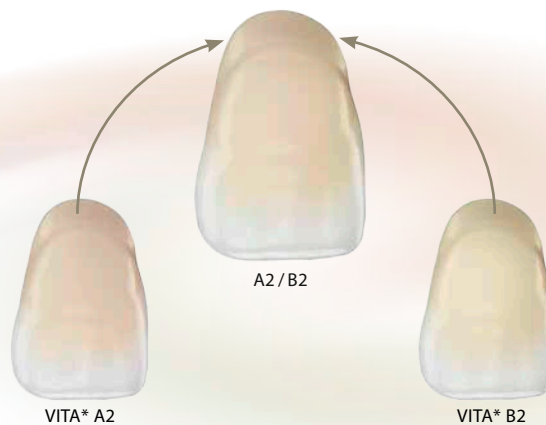
AESTHETIC SINGLE-SHADE RESTORATIONS WITH UNIVERSAL¹ SHADES

BRILLIANT EverGlow harmoniously integrates into existing surroundings, with the application of a single shade already providing unerring highly aesthetic restorations. An additional enamel layer can often be dispensed with. Exept in case of very young

patients or when remodelling especially translucent incisal edges, can one resort to enamel shades. This was made possible by further developing the adaptive «Duo Shade» system of COLTENE. Due to its excellent optical blend-in properties,

each shade covers two VITA* shades at the same time, resulting in A1 / B1 or A2 / B2, for example.

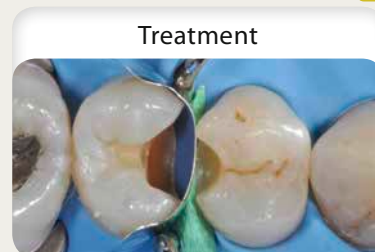
* VITA is not a trademark of Coltène/Whaledent



CLINICAL CASES WITH UNIVERSAL¹ SHADES ONLY



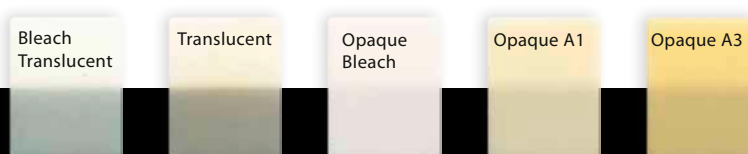
A2 / B2 ■



A FLEXIBLE SYSTEM FOR ALL INDICATIONS

BRILLIANT EverGlow is a sensible and truly versatile system giving the dentist freedom to achieve highly aesthetic restorations. In addition to the universal shades there are two translucent shades which provide the option of an individual characterisation of

particularly translucent enamel areas. The BRILLIANT EverGlow shade system is finally completed with three opaque shades. With these strongly discoloured teeth can be masked, providing the basis for an aesthetic restoration.



- Simple shade management: A single shade provides two VITA shades ("Duo Shade" System)
- 7 universal composite shades, suitable for anterior and posterior regions
- Additional enamel and opaque shades for aesthetically more complex restorations



All pictures: Courtesy of the Styleitaliano Team
"Dentin" shades for single-shade restorations

SMOOTH CONSISTENCY PROVIDES IDEAL HANDLING

Its smooth consistency and dimensional stability make BRILLIANT EverGlow a state-of-the-art filling material easy and convenient to apply in cavities. Elaborately modelled cusps, ledges and contact points remain intact and do not slump. High resistance of the composite to prolonged exposure to surgery lighting completes ideal handling.

The smooth consistency and excellent wettability of BRILLIANT EverGlow make it ideal for luting COMPONEER, the Direct Composite Veneering System by COLTENE.

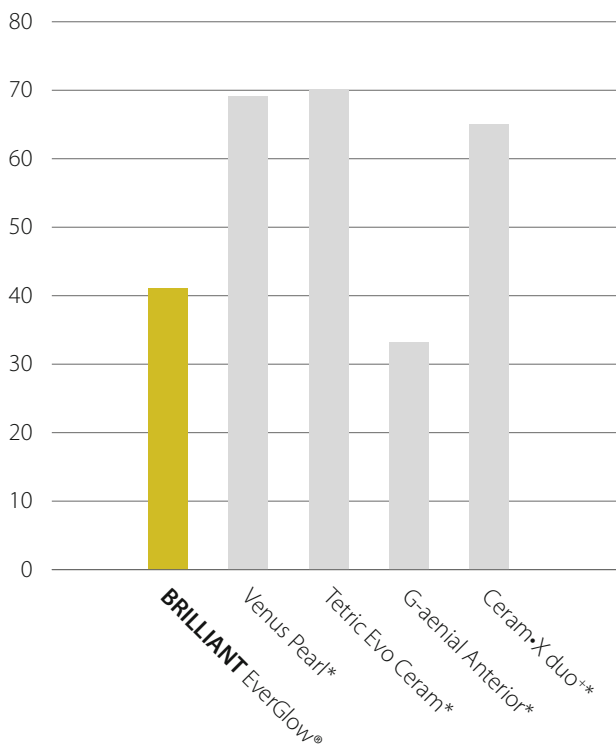


COMPONEER Direct Veneering System

GOOD WETTABILITY ON THE CONDITIONED TOOTH SURFACE

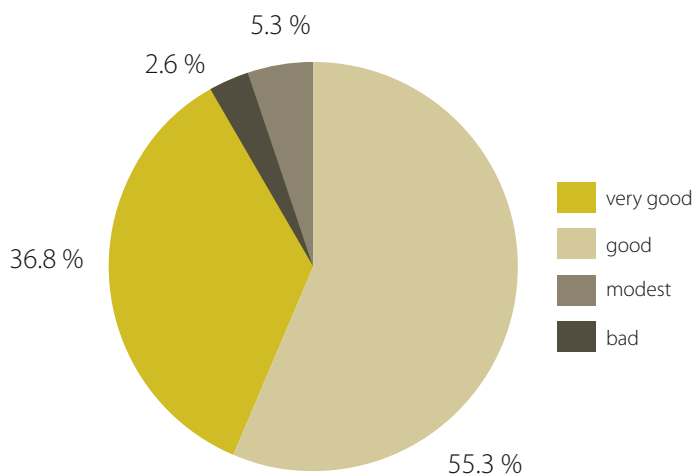
STICKINESS TO THE INSTRUMENT¹

Measured in Newton



Due to its good wettability, BRILLIANT EverGlow offers excellent adhesion to bonded tooth surfaces rather than sticking to the instruments. This has also been confirmed in an international user survey: over 90 % of participants rated the wetting properties as being «very good» or «good».

WETTABILITY ON BOND¹



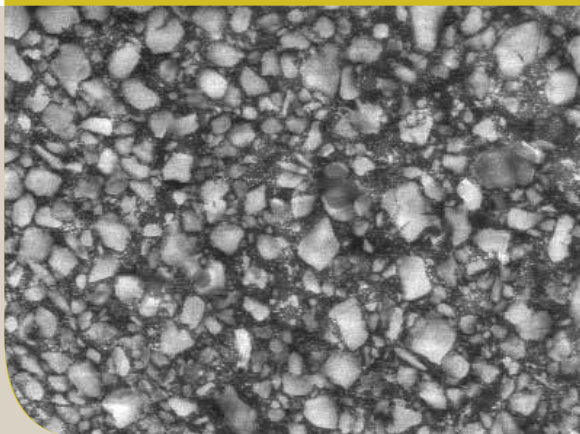
THE KEY TO BRILLIANT RESTORATIONS

THE BRILLIANT EVERGLOW FILLER TECHNOLOGY

BRILLIANT EverGlow's filler technology is all geared to provide an ideal mixture of handling convenience, mechanical strength and long-lasting aesthetics. It is based on three core facts: submicron barium glass fillers care for excellent polishability and gloss retention where as BRILLIANT EverGlow's pre-polymerised fillers lower volume shrinkage and improve sculpting properties of the paste without impairing polishability and gloss retention thanks to their sophisticated composition ideally harmonizing with the composite. Above all, the filler surfaces are treated to ensure optimal compound strength within the resin matrix and support gloss retention. The result is a state-of-the-art composite that allows for "brilliant" restorations.

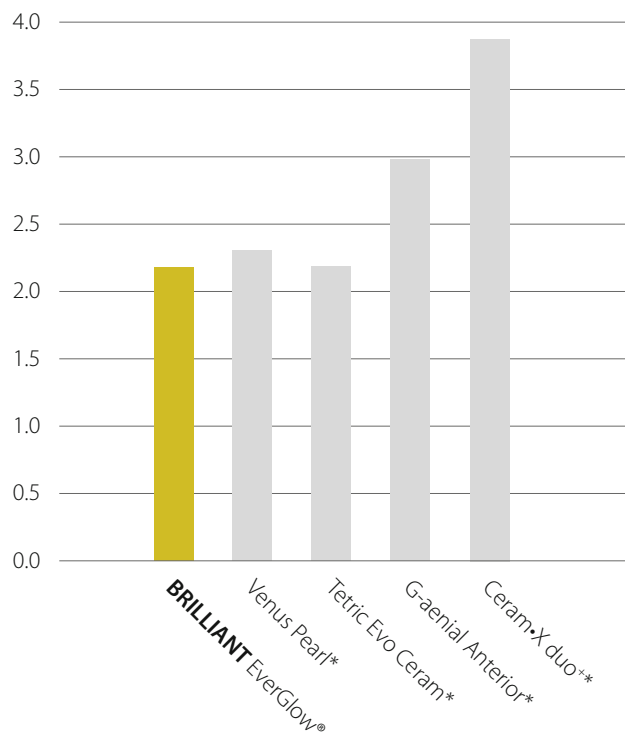
SIMPLY IMPRESSIVE

SEM picture of BRILLIANT EverGlow



MINIMAL ABRASION¹

Relative loss of volume (dimensionless)



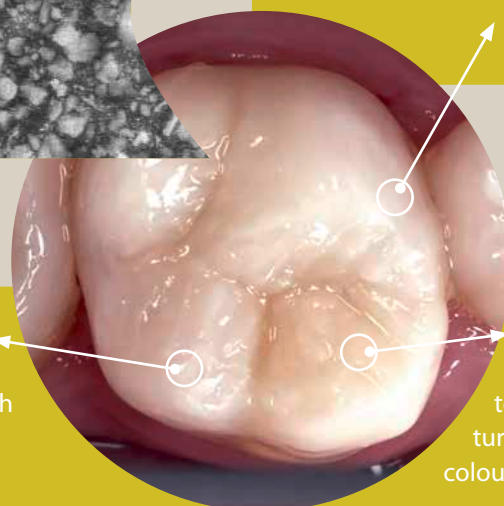
¹ Source: internal data | * not a trademark of COLTENE

MINIMAL ABRASION

Compared to other conventional composites, BRILLIANT EverGlow displays significantly lower abrasion values (see graph above).

HIGH COMPRESSIVE STRENGTH

Ideal for restorations of posterior teeth due to high resistance to mastication forces.



LOW WATER ABSORPTION

The optimised composition leads to lower water absorption, which in turn leads to excellent long-term colour stability.

ORDER INFORMATION



BRILLIANT EverGlow Kits	Opaque Shades			Universal Shades						Translucent Shades		
	Opaque Bleach (OBL)	Opaque A1 (OA1)	Opaque A3 (OA3)	Bleach (BL)	A1 / B1	A2 / B2	A3 / D3	A3.5 / B3	C2 / C3	A4 / C4	Bleach Translucent (BL Trans)	Translucent (Trans)
Trial Kits												
6001 9720 4 Syringes à 3g						1	1	1				1
6001 9721 32 Tips à 0,2g						8	8	8				8
Anterior Kits												
6001 9724 4 Syringes à 3g				1	1						1	1
6001 9725 32 Tips à 0,2g				8	8						8	8
System Kits												
6001 9722 9 Syringes à 3g				1	1	1	1	1	1	1	1	1
6001 9723 60 Tips à 0,2g				5	8	8	8	8	5	5	5	8
Regular Kits												
6001 9726 9 Syringes à 3g		1	1		1	1	2	1	1			1
6001 9727 60 Tips à 0,2g		5	5		5	10	12	10	5			8
Anterior Kits Large												
6001 9728 9 Syringes à 3g	1	1		2	2	1					1	1
6001 9729 60 Tips à 0,2g	5	5		12	12	10					8	8

BRILLIANT EverGlow Refills Tips (20 × 0,2g)

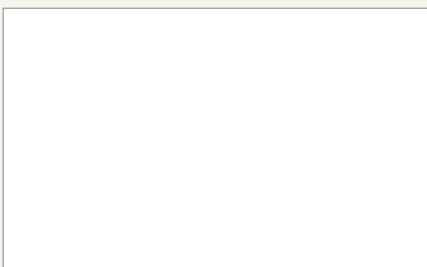
- 6001 9746 Opaque Bleach (OBL)
- 6001 9747 Opaque A1 (OA1)
- 6001 9748 Opaque A3 (OA3)
- 6001 9706 Bleach (BL)
- 6001 9707 A1 / B1
- 6001 9708 A2 / B2
- 6001 9709 A3 / D3
- 6001 9710 A3.5 / B3
- 6001 9716 C2 / C3
- 6001 9717 A4 / C4
- 6001 9718 Translucent (Trans)
- 6001 9719 Bleach Translucent (BL Trans)

BRILLIANT EverGlow Refills Syringes (1 × 3 g)

- 6001 9743 Opaque Bleach (OBL)
- 6001 9744 Opaque A1 (OA1)
- 6001 9745 Opaque A3 (OA3)
- 6001 9697 Bleach (BL)
- 6001 9698 A1 / B1
- 6001 9699 A2 / B2
- 6001 9700 A3 / D3
- 6001 9701 A3.5 / B3
- 6001 9702 C2 / C3
- 6001 9703 A4 / C4
- 6001 9704 Translucent (Trans)
- 6001 9705 Bleach Translucent (BL Trans)



© 2016 Coltène/Whaledent AG - www.coltene.com



Coltène/Whaledent Ltd.
The President Suite
Kendal House, Victoria Way
Burgess Hill, West Sussex
RH15 9NF / UK
T +44 1444 235486
F +44 1444 870640
info.uk@coltene.com

Coltène/Whaledent AG
Feldwiesenstr. 20
9450 Altstätten / Switzerland
T +41 71 757 53 00
F +41 71 757 53 01
info.ch@coltene.com

Coltène/Whaledent Inc.
235 Ascot Parkway
Cuyahoga Falls, Ohio 44223 / USA
T +1 330 916 8800
F +1 330 916 7077
info.us@coltene.com

